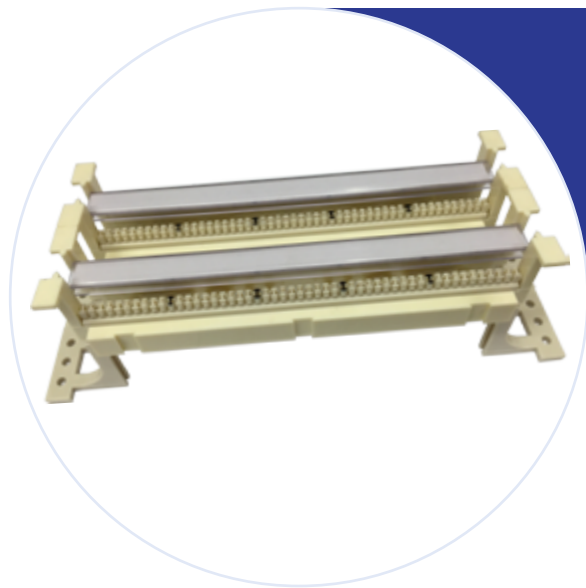


# HydraX™ 110 Voice Series Patch Panel

50/100/200/300 Pairs Wall Mount



*HydraX™ 110 Voice series Wall-Mount patch panels are designed for connecting telecommunication in structured wiring. It is used to connect, manage, identify and crossconnect communications equipment wiring in telecommunications closets and main distribution frames.*

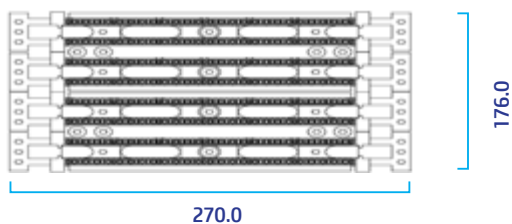
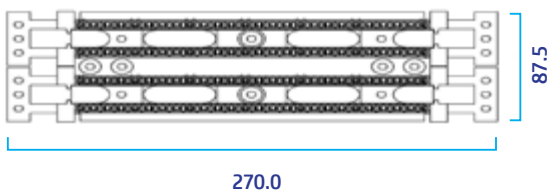
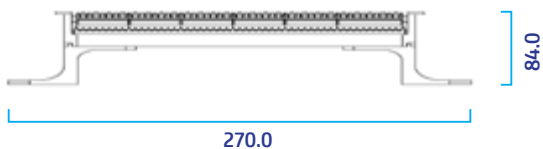
## Features & Benefits

Support Voice application.

Compatible with existing 110 installations

Allows cable jacket end to be within 1/2" from IDC connection per telecom requirements

Easy installation of 4-pair & 25-pair cabling



## Characteristics & Properties

<b>Material of IDC</b>	Phosphor Bronze
<b>Material of Housing</b>	PC
<b>Number of Pair</b>	50/100/200/300
<b>Number of Unit</b>	1/2/4/6

# HydraX™ 110 Voice Series Patch Panel

50/100/200/300 Pairs Wall Mount

PRODUCT CODE	DESCRIPTION
VP-W050S1	50-pair, wall-mount full set w/legs
VP-W100S1	100-pair, wall-mount full set w/legs
VP-W200S1	200-pair, wall-mount full set w/legs
VP-W300N1	300-pair, wall-mount full set w/o legs

## Related Products

PRODUCT CODE	
CT-0003	4 pairs IDC
CT-0004	5 pairs IDC
VPC-031020	1 pair 110-RJ45 voice patch cord, PVC jacket, 2mtr
VPC-442010	2 pairs 110-110 voice patch cord, LSOH jacket, 1mtr
VPC-502010	4 pairs 110-RJ45 voice patch cord, LSOH jacket, 1mtr